



bishe[®]

WELCOME TO THE WORLD OF **SHE PROFESSIONALS**



SHE hair professional extensions

SHE company is widely recognized as an industry leader for providing state-of-the-art technology, advanced application techniques and superior products in the extension market.

Since 1995 SHE company is the best in the field of hair cosmetics professionals, thanks to the excellent quality of its products that have guaranteed the success over the years. The company offers a variety of hair extension application systems using only 100% natural hair. SHE is pleased to present her new collection: Colors of seduction featuring 102 "color effects". The new techniques of Rooted color, Balayage, Ombre and Shatush give the possibility to countless combinations and free the creativity of every professional.

Become part of the SHE world and you will feel like a star, with SHE products you will see the difference!

she[®]
PROFESSIONALS

SHE COLORS

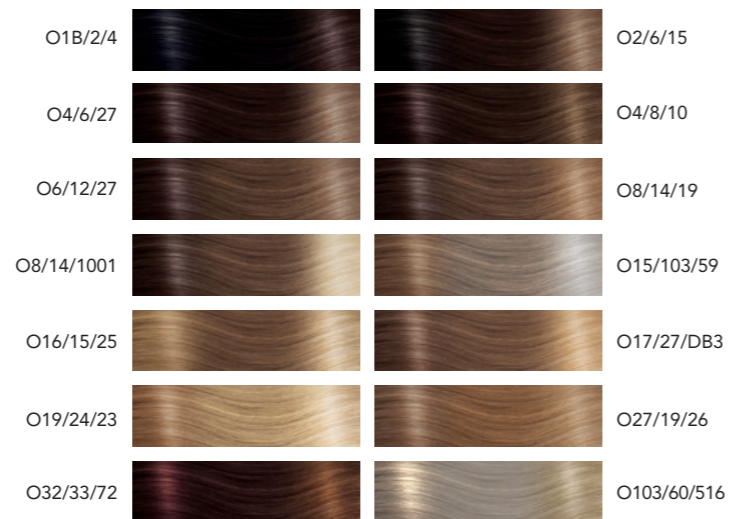
natural color NATURAL COLORS
AVAILABLE IN 45 COLORS



balayage effect BALAYAGE COLORS
AVAILABLE IN 15 COLORS



ombre effect OMBRE COLORS
AVAILABLE IN 14 COLORS



shatush effect SHATUSH COLORS
AVAILABLE IN 17 COLORS



rooted color ROOTED COLORS
AVAILABLE IN 19 COLORS



FASHION TAPE

SHE hair professional **fashion tape** extensions

/ latest application technique available on the market today

/ Fashion Tape's technology is the latest trend in the hair extension market – and easy to learn

/ full head of extensions in just a few minutes with flawless results

/ color-effects for endless creative possibilities



FASHION TAPE - basic

Pack: 10 pcs per pack

Weight: 7-8 g per pack

Apply: tape



FASHION TAPE - structure and length

Straight hair: 40/50 cm

FASHION TAPE - colors



NATURAL



ROOTED



OMBRE



BALAYAGE



FASHION
tape



40/50 CM - STRAIGHT HAIR

ART.NR: 60154 (FTX1011)

COLOR: chocolate, 1B, 1N, 2, 3, 4, 5, 6, 7, 8, 10, 12, 14, 15, 16, 17, 18,19, 20, 22, 23, 24, 25, 26, 27, 28, 32, 35, 59, 60, 61, 72, 73, 74, 101, 103, 112, 130, 140, 516, 1000, 1001.



40/50 CM - STRAIGHT HAIR

ART.NR: 60169 (FTX1031)

COLOR: R2/6, R2/61, R4/8, R4/10, R4/17, R6/12, R6/27, R8/14, R8/16, R10/15, R10/DB2, R12/26, R14/1001, R15/516, R15/DB3, R17/20, R18/24, R18/60, R19/25.



40/50 CM - STRAIGHT HAIR

ART.NR: 60167 (FTX1027)

COLOR: O1B/2/4, O2/6/15, O4/8/10, O4/6/27, O6/12/27, O8/14/19, O8/14/1001, O15/103/59, O16/15/25, O17/27/DB3, O19/24/23, O27/19/26, O32/33/72, O103/60/51.



40/50 CM - STRAIGHT HAIR

ART.NR: 60168 (FTX1023)

COLOR: B2/61, B4/8, B4/17, B6/12, B6/27, B8/26, B10/DB2, B12/26, B14/1001, B15/516, B17/20, B18/24, B18/60, B32/130, BDB3/20.

KERATIN SYSTEM

SHE hair professional **keratin system** extensions

/ comes in three different structures

/ you can separate the keratine base, to create smaller pieces

/ you can create any hairstyle you wish, which gives maximal flexibility for the customer



STRAIGHT



WAVY



CURLY



KERATIN SYSTEM - info

Pack: 10 pcs per pack

Weight: 7-8 g per pack

Apply: tool to apply keratine extensions

KERATIN SYSTEM - structure and length

Comes in three different structures - straight, wavy and curly

Straight: 30/40 cm, 50/55 cm, 60/70 cm

Wavy: 50/60 cm

Curly: 50/60 cm

KERATIN SYSTEM - colors



NATURAL



OMBRE



BALAYAGE



SHATUSH



ROOTED





30/40 CM - STRAIGHT HAIR

ART.NR: 60138 (SHE 8001LC)

COLOR: 1B, 1N, 2, 4, 6, 8, 10, 12, 14, 15, 16, 17, 18, 19, 20, 22, 23, 24, 25, 26, 27, 28, 29, 30, 32, 33, 35, 59, 60, 61, 63, 72, 73, 74, 101, 112, 140, 516, 530, 1000, 1001, DB3, 2/17, 6/12, 6/27, 8/26, 12/26, 14/1001, 15/516, 18/24, 32/130, 20/27, 33/21.

50/55 CM - STRAIGHT HAIR

ART.NR: 60135 (SHE 8000L)

COLOR: chocolate, 1B, 1N, 2, 3, 4, 5, 6, 7, 8, 10, 12, 14, 15, 16, 17, 18, 19, 20, 22, 23, 24, 25, 26, 27, 28, 29, 30, 32, 33, 35, 59, 60, 61, 63, 72, 73, 74, 101, 112, 140, 516, 530, 1000, 1001, DB3, 8/26, 2/17, 6/12, 6/27, 12/26, 14/1001, 15/516, 18/24, 32/130, 20/27, 33/21.

60/70 CM - STRAIGHT HAIR

ART.NR: 60139 (SHE 8010XXL)

COLOR: 1B, 2, 4, 6, 8, 12, 17, 20, 26, 27, 32, 33, 35, 130, 1001.

50/60 CM - WAVY HAIR

ART.NR: 60136 (SHE 8002M)

COLOR: 1B, 2, 4, 6, 8, 10, 12, 14, 15, 16, 17, 19, 20, 23, 24, 25, 26, 27, 28, 29, 30, 32, 33, 35, 59, 60, 61, 101, 140, 516, 530, 1000, 1001, DB3, 2/17, 6/12, 6/27, 8/26, 12/26, 14/1001, 15/516, 18/24, 20/27, 32/130, 33/21.

50/60 CM - CURLY HAIR

ART.NR: 60137 (SHE 8004R)

COLOR: 1B, 2, 4, 6, 8, 10, 12, 14, 15, 16, 17, 19, 20, 24, 25, 26, 27, 28, 30, 32, 33, 35, DB3, 1001.



50/60 CM - STRAIGHT HAIR

ART.NR: 60178 (SHE 8022OL)

COLOR: O1B/2/4, O2/16/15, O4/6/27, O6/12/27, O8/14/19, O8/14/1001, O15/103/59, O19/24/23, O32/33/72, O103/60/516.



50/60 CM - STRAIGHT HAIR

ART.NR: 60177 (SHE 8012B)

COLOR: B2/6, B4/8, B4/17, B6/12, B6/27, B8/26, B10/DB2, B12/26, B14/1001, B15/516, B18/24, B18/60.



50/60 CM - STRAIGHT HAIR

ART.NR: 60122 (SHE 8007D)

COLOR: T2/60, T2/61, T4/17, T6/12, T6/27, T8/26, T10/DB2, T12/26, T14/1001, T15/516, T17/20, T18/24, T18/60, T32/130.



50/60 CM - STRAIGHT HAIR

ART.NR: 60179 (SHE 8018RL)

COLOR: R14/1001, R15/516, R18/24, R2/6, R4/8.

CLIP-IN SYSTEM

SHE hair professional **clip-in system** extensions

/ creates a quick and easy change in length and volume

/ use only a few pieces for a color effect

/ an easy system without permanent attachment

/ you can create any hairstyle you wish, which gives maximal flexibility for the customer



CLIP-IN SYSTEM - info

Pack: see different products

Weight: depending on size

Apply: hairloc clips



CLIP-IN SYSTEM - sizes

Comes in two different lengths and different sizes - see next page

Straight: 40/45 cm, 45/50 cm 50/55 cm

CLIP-IN SYSTEM - colors



NATURAL





**40/45 CM - STRAIGHT HAIR
EXTENCLIP**

ART.NR: 60051

CONTAINS: 9 pieces - 1 x 23 cm,
1 x 20 cm, 1 x 16 cm, 2 x 10 cm, 4 x 3 cm.

WEIGHT: 110 g.

COLOR: 1B, 2, 4, 6, 8, 10, 12, 14, 15, 16,
17, 19, 20, 24, 25, 26, 27, 28, 30, 32, 33,
130, 140, 516, DB2, DB3, DB4, 60, 1000,
1001, 8/26, 6/12, 6/27, 12/26, 14/1001,
18/24, 20/27, DB3/20, 32/130.

**40/45 CM - STRAIGHT HAIR
ONE CLIP**

ART.NR: 60162

CONTAINS: 1 piece, 1 x 2,5 cm.

WEIGHT: 5 g.

COLOR: 1B, 2, 4, 6, 8, 14, 17, 20, 24,
25, 27, 1000, 1001.

**45/50 CM - STRAIGHT HAIR
DONNA**

ART.NR: 60053

CONTAINS: 1 piece, 1 x 16 cm,
thread for application.

WEIGHT: 100 g.

COLOR: 1B, 2, 4, 6, 8, 10, 12, 14, 17,
20, 24, 26, 27, 32, 33, 35, 130, 1001,
DB3, 8/26, 6/12, 6/27, 12/26, 14/1001,
18/24, 20/27, DB3/20, 32/130.

**50/55 CM - STRAIGHT HAIR
EASY ONE CLIP**

ART.NR: 60160

CONTAINS: 1 piece, 1 x 16 cm.

WEIGHT: 27 g.

COLOR: 1B, 2, 4, 6, 8, 14, 17, 20, 24,
27, 1000, 1001, DB2.

**45/50 CM - STRAIGHT HAIR
EASY LONG HAIR**

ART.NR: 60055

CONTAINS: 5 pieces - 1 x 20 cm,
1 x 18 cm, 1 x 16 cm, 2 x 10 cm.

WEIGHT: 75 g.

COLOR: 1B, 2, 4, 6, 8, 10, 12, 14, 17,
20, 24, 26, 27, 32, 33, 130, DB3, 1001,
6/12, 6/27, 8/26, 12/26, 14/1001,
18/24, 20/27, 32/130, DB3/20.



WEFT SYSTEM

SHE hair professional **weft system** extensions

/ flexibel application system - using clips, weaving or glue

/ use without application as a complement or to fill out hairstyle

/ cut easily in requested pieces

/ comes in two different lengths and structures in a variety of colors



STRAIGHT



WAVY



WEFT SYSTEM - info

Pack: 1 pcs per pack

Weight: 100 g per pack

Apply: your choice - hairloc, weaving or adhesives

WEFT SYSTEM - structure and lengths

Comes in three different structures - straight and wavy.

Straight: 30/40 cm, 50/60 cm

Wavy: 50/60 cm

WEFT SYSTEM - colors



NATURAL



SHATUSH





30/40 CM - STRAIGHT HAIR

ART.NR: 60045

COLOR: 1B, 2, 4, 6, 8, 10, 12, 14, 15, 16, 17, 19, 20, 21, 23, 24, 25, 26, 27, 28, 29, 30, 32, 33, 35, 59, 60, 61, 101, 103, 130, 140, 516, 530, 1000, 1001, DB2, DB3, DB4, 8/26, 18/24, 32/130, 20/27, 12/26, 21/130, 1B/530, 14/1001, 2/17, 6/12, 6/27, 32/530, 33/21, DB3/20.

50/60 CM - STRAIGHT HAIR

ART.NR: 60032

COLOR: 1B, 2, 4, 6, 8, 10, 12, 14, 15, 16, 17, 19, 20, 21, 23, 24, 25, 26, 27, 28, 29, 30, 32, 33, 35, 59, 60, 61, 101, 103, 130, 140, 516, 530, 1000, 1001, DB2, DB3, DB4, 18/24, 32/130, 8/26, 14/1001, 12/26, 20/27, 6/27, DB3/20.

50/60 CM - WAVY HAIR

ART.NR: 60040

COLOR: 1B, 2, 4, 6, 8, 10, 12, 14, 15, 16, 17, 19, 20, 21, 23, 24, 25, 26, 27, 28, 29, 30, 32, 33, 35, 59, 60, 61, 101, 103, 130, 140, 516, 530, 1000, 1001, DB2, DB3, DB4, 18/24, 32/130, 8/26, 14/1001, 12/26, 20/27, 6/27, DB3/20.



50/60 CM - STRAIGHT HAIR

ART.NR: 60046

COLOR: T6/12, T6/27, T8/26, T10/DB2, T12/26, T14/1001, T17/20, T18/24, T27/20, T32/130.

PONYTAILS

SHE hair professional ponytails



PONY TAIL - info

Pack: 1 piece

Apply: use a small comb

Advice: place it high up, in the neck or on the side. Use the hair piece as it is, braid it, twist it or make a big twist. Depending on what hairstyle you wish.



DEA - SYNTHETIC - STRAIGHT HAIR

ART.NR: 72240

LENGTH: 50/55 cm.

COLOR: 1B, 2, 4, 6, 8, 10, 20, 22, 25, 32, 4/17, 15/25, 18/24, 20/27, 27/28, 32/130, 614/21.



DIVA - 100% NATURAL - STRAIGHT HAIR

ART.NR: 72242

LENGTH: 45/50 cm.

COLOR: 2, 4, 6/12, 6, 8, 14/1001, 18/24, 19, 20, 20/27, 24, 25, 1001, DB3/20, 516, 60.

JANA - SYNTHETIC - WAVY HAIR

ART.NR: 72241

LENGTH: 50/55 cm.

COLOR: 1B, 2, 4, 6, 8, 10, 20, 22, 25, 32, 4/17, 15/25, 18/24, 20/27, 27/28, 32/130, 614/21.



1.



2.



3.



4.



5.



6.

WEAVING



7.



8.

1. TOOL TO APPLY KERATIN EXTENSIONS

ART.NR: 91083

2. PLASTIC SHIELDS FOR EXTENSIONS

Pack of 6 pieces.

ART.NR: 92160

3. KERATIN TIPS

For application of extensions, pack of 25 pcs.

ART.NR: 60126

4 PLIER TO REMOVE AND APPLY HAIREXTENSIONS

Useful for bothe removal and for applying.

ART.NR: 92168

5. SOLVENT

To remove keratin extensions.

SOLGEL 100 ML | ART.NR: 91021

SOLVENT 80 ML | ART.NR: 80047

6. WORK BAG

ART.NR: 99030

7. NYLON THREAD

Colors: blonde, lighth brown, dark brown.

ART.NR: 92325

8. NEEDLES WEAVING

7 pieces. Different sizes.

ART.NR: 92398

ACCESSORIES

1. HAIRLOC - MINI, MIDI AND MAXI

Colors: black, beige and brown.

MAXI 3,2 cm | ART.NR: 92024

MIDI 2,8 cm | ART.NR: 92025

MINI 2 cm | ART.NR: 92026

2. MINI FLATTENING IRON

To apply tape hair.

ART.NR: 90648

3. TAPE STRIPS

Adhesives strips.

4 CM | ART.NR: 90603

2 CM | ART.NR: 90664



1.

4. SECTION DISCS

6 pieces.

ART.NR: 90600

5. COLOR RING

100% natural hair.

ART.NR: 99027

6. HAIR CLIPS

Metal, 24 pieces.

ART.NR: 90607



2.



3.



4.



5.



6.



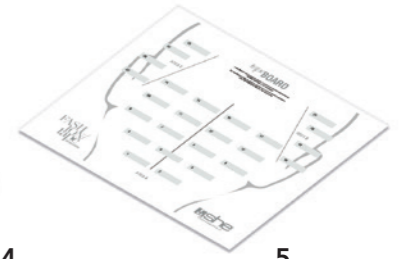
1.

2.



3.

4.

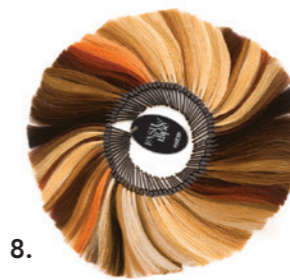


5.



6.

7.



8.



9.



10.



11.

1. TAPE REMOVER

ART.NR: 90671

2. CLEAN TAPE

ART.NR: 90672

3. TAPE

Adhesives strips for fashion tape-in basic.

ART.NR: 90669

4. SINGLE TAPE

Single adhesives strips for fashion tape-in basic.

ART.NR: 93003

5. BASE 25 | 33,5 x 29 cm

Base for fashion tape-ins re-use.

ART.NR: 93008

6. EASY RAZOR

Black or orange. ART.NR: 93006

7. RZB02 | SPARE BLADES FOR EASY RAZOR

ART.NR: 93007

8. COLOR RING - FASHION TAPE

ART.NR: 93007

9. PROFESSIONAL RECTANGULAR BRUSH

Medium size, Wooden brush.

ART.NR: 93002

10. PROFESSIONAL OVAL BRUSH

Small and Medium, Wooden brush.

SMALL | ART.NR: 93001

MEDIUM | ART.NR: 93000

11. CAPE FASHION TAPE

ART.NR: 93009

FASHION CARE



SHE fashion care

is a MADE IN ITALY line of high professional cosmetics for hair. Born as a complement to SHE's extension collections and it is perfect for any use even at home.

The elegant design, with the unmistakable Italian style, characterizes the product, which also becomes an excellent complementary selling point for the salon.

FASHION CARE products have been designed to give beauty, wellbeing and professionalism.



1

1. NOURISHING MOISTURISING SHAMPOO | 250 ML

Gently cleanses hair, leaving it strong, soft, silky and shiny, for a hairstyle that looks perfect at all times.

ART.NR: 83002

2

2. RESTRUCTURING REGENERATING MASK | 250 ML

Nourishes hair deep down and instantly detangles, for a glamorous and radiant look.

ART.NR: 83003

3

3. INSTANT LEAVE-IN RESTRUCTURER | 150 ML

Nourishes and eliminates frizz and gives body to even the finest hair. Do not rinse.

ART.NR: 83004

Salon products



1. NOURISHING MOISTURISING SHAMPOO | 1000 ML

ART.NR: 83005

2. RESTRUCTURING REGENERATING MASK | 500 ML

ART.NR: 83006



HAIR CARE



- 1. 4U SHAMPOO | 250 ML
ART.NR: 80850
- 2. 4U CONDITIONER | 250 ML
ART.NR: 80851
- 3. 4U EVERYDAY CONDITIONER | 125 ML
ART.NR: 80852
- 4. 4U SILK PROTEIN | 60 ML
ART.NR: 80856

- 5. ARGAN SHAMPOO
250 ML AND 1000 ML
250 ML | ART.NR: 80861
1000 ML | ART.NR: 80866

- 6. ARGAN CONDITIONER
250 ML AND 500 ML
250 ML | ART.NR: 80862
500 ML | ART.NR: 80867

- 7. ARGAN CREAM | 150 ML
ART.NR: 80863

- 8. ARGAN OIL | 30 ML AND 100 ML
30 ML | ART.NR: 80864
100 ML | ART.NR: 80868

- 9. ARGAN OIL SPRAY | 100 ML
ART.NR: 80865



- 10. SUNRISE SHAMPOO | 150 ML
ART.NR: 80970
- 11. SUNRISE MASK | 150 ML
ART.NR: 80971
- 12. SUNRISE PROTECTIVE SPRAY | 150 ML
ART.NR: 80972



- 1. FASHION CARE BRUSH MEDIUM | ART.NR: 93000
- 2. FASHION CARE BRUSH SMALL | ART.NR: 93001



- 3. EXTENSIONS BRUSH
ART.NR: 92159
- 4. EXTENSIONS BRUSH
ART.NR: 92015



- 5. FASHION CARE BRUSH
ART.NR: 93002

5.

BRUSHES

Toupémas
Belgal
by **Aderans**

Carl M. Lundh
CARL M. LUNDH
by **Aderans**



SWEDEN

TOUPÉMA BELGAL
020-36 87 00
toupemabelgal.se

DENMARK

CARL M LUNDH
78 77 05 46
carlmundh.dk

NORWAY

CARL M LUNDH
219 39 620
carlmundh.no